



COPY

REGENT SUKOHARJO
PROVINCE OF CENTRAL JAVA
SUKOHARJO REGENCY REGULATIONS
NUMBER 89 OF 2018
ABOUT
INSTRUCTIONS FOR IMPLEMENTING REGIONAL REGULATIONS OF SUKOHARJO DISTRICT
NUMBER 9 OF 2018 CONCERNING ADVERTISEMENT IMPLEMENTATION

BY THE GRACE OF GOD ALMIGHTY

REGENT SUKOHARJO,

Considering: that in order to implement the provisions in Article 9 paragraph (3),

Article 11 paragraph (6), Article 12 paragraph (3), Article 16 paragraph (2), Article 18 paragraph (2), Article 20 paragraph (2), Article 22 paragraph (3), Article 23 paragraph (3) and Article 24 paragraph (5) Sukoharjo Regency Regional Regulations Number 9 of 2018 concerning the Implementation of Advertisements, it is necessary to stipulate a Regent's Regulation concerning Implementation Guidelines Sukoharjo Regency Regional Regulation Number 9 of 2018 concerning Implementation of Advertisements;

Bearing in mind: 1. Law Number 13 of 1950 concerning the Establishment of Regency Areas within the Province of Central Java;

2. Law Number 28 of 2002 concerning Buildings (State Gazette of the Republic of Indonesia of 2002 Number 134, Supplement to State Gazette of the Republic of Indonesia Number 4247);
3. Law Number 38 of 2004 concerning Roads (State Gazette of the Republic of Indonesia of 2004 Number 132, Supplement to State Gazette of the Republic of Indonesia Number 4444);
4. Law Number 26 of 2007 concerning Spatial Planning (State Gazette of the Republic of Indonesia of 2007 Number 68, Supplement to State Gazette of the Republic of Indonesia Number 4725);
5. Law Number 22 of 2009 concerning Road Traffic and Transportation (State Gazette of the Republic of Indonesia of 2009 Number 96, Supplement to State Gazette of the Republic of Indonesia Number 5025);
6. Law Number 25 of 2009 concerning Public Services (State Gazette of the Republic of Indonesia of 2009 Number 112, Supplement to State Gazette of the Republic of Indonesia Number 5038);

7. Law Number 28 of 2009 concerning Regional Taxes and Regional Levies (State Gazette of the Republic of Indonesia of 2009 Number 130, Supplement to State Gazette of the Republic of Indonesia Number 5049);
8. Law Number 32 of 2009 concerning Environmental Protection and Management (State Gazette of the Republic of Indonesia of 2009 Number 140, Supplement to State Gazette of the Republic of Indonesia Number 5059);
9. Law Number 12 of 2011 concerning the Formation of Legislation (State Gazette of the Republic of Indonesia of 2011 Number 82, Supplement to the State Gazette of the Republic of Indonesia Number 5234);
10. Law Number 23 of 2014 concerning Regional Government (State Gazette of the Republic of Indonesia of 2014 Number 244, Supplement to Gazette of the Republic of Indonesia Number 5587), as amended several times, most recently by Law Number 9 of 2015 concerning the Second Amendment to the Law. Law Number 23 of 2014 concerning Regional Government (State Gazette of the Republic of Indonesia of 2014 Number 246, Supplement to State Gazette of the Republic of Indonesia Number 5589);
11. Government Regulation Number 26 of 2008 concerning National Regional Spatial Planning (State Gazette of the Republic of Indonesia of 2008 Number 48, Supplement to State Gazette of the Republic of Indonesia Number 4883);
12. Government Regulation Number 109 of 2012 concerning Supervision of Materials Containing Additives in the Form of Tobacco Products for Health (State Gazette of the Republic of Indonesia of 2012 Number 278, Supplement to the State Gazette of the Republic of Indonesia Number 5380);
13. Government Regulation Number 27 of 2014 concerning Management of State/Regional Property (State Gazette of the Republic of Indonesia 2014 Number 92, Supplement to State Gazette of the Republic of Indonesia Number 5533);
14. Government Regulation Number 18 of 2016 concerning Regional Apparatus (State Gazette of the Republic of Indonesia of 2016 Number 114, Supplement to the State Gazette of the Republic of Indonesia Number 5887);
15. Presidential Regulation Number 87 of 2014 concerning Implementing Regulations of Law Number 12 of 2011 concerning the Formation of Legislative Regulations (State Gazette of the Republic of Indonesia of 2014 Number 199);
16. Minister of Home Affairs Regulation Number 80 of 2015 concerning the Formation of Regional Legal Products (State Gazette of the Republic of Indonesia of 2015 Number 2036);
17. Sukoharjo Regency Regional Regulation Number 1 of 2010 concerning Principles of Regional Financial Management (Sukoharjo Regency Regional Gazette of 2010 Number 1, Supplement to Sukoharjo Regency Regional Gazette Number 172);

18. Sukoharjo Regency Regional Regulation Number 9 of 2010 concerning Buildings in Sukoharjo Regency (Sukoharjo Regency Regional Gazette of 2010 Number 9, Supplement to Sukoharjo Regency Regional Gazette Number 178);
19. Sukoharjo Regency Regional Regulation Number 14 of 2011 concerning Sukoharjo Regency Regional Spatial Plan for 2011-2031 (2011 Sukoharjo Regency Regional Gazette Number 14, Supplement to Sukoharjo Regency Regional Gazette Number 192) as amended by Sukoharjo Regency Regional Regulation Number 1 of 2011 2018 concerning Amendments to Sukoharjo Regency Regional Regulation Number 14 of 2011 concerning Sukoharjo Regency Spatial Planning for 2011-2031

(2018 Sukoharjo Regency Regional Gazette Number 1, Supplement to Sukoharjo Regency Regional Gazette Number 262);
20. Sukoharjo Regency Regional Regulation Number 2 of 2016 concerning Boundary Lines (Sukoharjo Regency Regional Gazette of 2016 Number 2, Supplement to Sukoharjo Regency Regional Gazette Number 227);
21. Sukoharjo Regency Regional Regulation Number 4 of 2016 concerning Civil Servant Investigators (Sukoharjo Regency Regional Gazette of 2016 Number 4, Supplement
Sukoharjo Regency Regional Gazette Number 229);
22. Sukoharjo Regency Regional Regulation Number 12 of 2016 concerning the Formation and Structure of Regional Apparatus (Sukoharjo Regency Regional Gazette of 2016 Number 12, Supplement to Sukoharjo Regency Regional Gazette Number 236);
23. Sukoharjo Regency Regional Regulation Number 21 of 2017 concerning Management of Regional Property (Sukoharjo Regency Regional Gazette of 2017 Number 21, Supplement to Sukoharjo Regency Regional Gazette Number 261);
24. Sukoharjo Regency Regional Regulation Number 9 of 2018 concerning Implementation of Advertisements (Sukoharjo Regency Regional Gazette of 2018 Number 9, Supplement to Sukoharjo Regency Regional Gazette Number 269);

DECIDE :

To stipulate: REGENT'S REGULATION CONCERNING TECHNICAL INSTRUCTIONS FOR THE IMPLEMENTATION OF SUKOHARJO DISTRICT REGIONAL REGULATION NUMBER 9 OF 2018 CONCERNING IMPLEMENTATION OF ADVERTISEMENTS.

PIG
GENERAL REQUIREMENTS

article 1

In this Regent's Regulation what is meant by:

1. The region is Sukoharjo Regency.
2. Regional Government is the Regent as an element of regional government administrators who leads the implementation of government affairs which fall under the authority of the autonomous region.
3. The Regent is the Regent of Sukoharjo.
4. Regional Apparatus is the supporting element of the Regent and the Regional People's Representative Council in the implementation of Government Affairs which fall under regional authority.
5. An entity is a group of people and/or capital is an entity both conducting business and not conducting business which includes Limited Liability Companies, Limited Liability Companies, Other Companies, State or Regional Owned Enterprises with any name and in any form, Firms, Kongsis, Cooperatives, Pension Funds, Guilds, Associations, Foundations, Mass Organizations, Social Political Organizations, or similar Organizations, Institutions, permanent establishments and other forms of business.
6. Advertisements are objects, tools, actions, or media whose shapes and various styles are designed for commercial purposes to introduce, recommend, promote, or to attract public attention to goods, services, people, or entities, which can be seen, read, heard, felt, and/or enjoyed by the public.
7. Organizing advertisements is a directed, integrated and sustainable effort carried out by the Regional Government which includes planning, implementation, guidance, supervision and control as well as controlling advertisements in order to realize harmonious use of space.
8. Advertisement Operator is any person or legal entity that organizes advertisements either for and on behalf of itself or for and on behalf of another party.
9. Advertisement Point is the place and/or location where the field advertisements erected or affixed.
10. Advertisement Tax is a tax on the operation of advertisements.
11. Election Contesting Political Parties, hereinafter referred to as Political Parties, are Political Parties that have fulfilled the requirements as election participants, members of the DPR, members of the Provincial DPRD and members of the Regency/City DPRD.

12. General elections, hereinafter referred to as Elections, are a means of popular sovereignty to have members of the People's Representative Council, members of the Regional Representative Council, President and Vice President and to elect members of the Regional People's Representative Council, which are carried out directly, publicly, freely, secretly, honestly and justice in the Unitary State of the Republic of Indonesia based on Pancasila and the 1945 Constitution of the Republic of Indonesia.

13. Election of the Governor and Deputy Governor or Regent and Deputy Regent, hereinafter referred to as Election, is the exercise of popular sovereignty in the Province and Regency areas to elect the Governor and Deputy Governor or Regent and Deputy Regent directly and democratically.

14. Civil Servant Investigators, hereinafter abbreviated as PPNS, are certain Civil Servant Officials within the Regional Government who are given special authority by law to carry out investigations into violations of Regional Regulations.

CHAPTER II

SCOPE

Section 2

The scope of this Regent's Regulation includes:

- a. types and classification of advertisements;
- b. mapping, arrangement and layout of advertisements;
- c. placing advertisements based on strategic value;
- d. requirements for advertising permits and extension of advertising permits;
- e. obligation to pay security deposit for demolition of advertisements and risk coverage;
- f. main or protocol road;
- g. procedures for supervision and control of implementation advertising;
- h. procedures for implementing participation; And
- i. procedures for imposing administrative sanctions.

CHAPTER III

TYPES OF ADVERTISEMENT CLASSIFICATION

Article 3

- (1) Types of Advertisements are classified based on the validity period and are divided into:
 - a. the validity period of the advertisement remains limited; And
 - b. validity period of incidental advertising.

- (2) The validity period of the advertisement remains limited as intended in paragraph (1) letter a consists of:
- a. Videotron/Megatron/LED;
 - b. Billboard/board/neon sign/shopsign; And
 - c. Advertisement for a pedestrian bridge.
- (3) The validity period of incidental advertisements as intended in paragraph (1) letter b consists of:
- a. banners/banners (MMT/cloth);
 - b. paste (cloth, plastic, sticker/poster/wallpainting);
 - c. billboard;
 - d. walking (including in vehicles);
 - e. leaflets;
 - f. demonstration;
 - g. air (balloon);
 - h. voice; And
 - i. slides/films.

CHAPTER IV

MAPPING, ARRANGING AND LAYOUT OF ADVERTISEMENTS

Part One

Mapping

Article 4

- (1) Planning for advertising implementation includes mapping and arranging advertising.
- (2) Mapping and arranging advertisements as referred to in paragraph (1) is in the form of an advertisement layout.
- (3) The layout of the advertisement as intended in paragraph (2) is the advertisement point.

The second part

Advertising Point

Article 5

- (1) The placement of advertising point locations is subject to the following provisions: with
- a. on arterial roads, it is intended for placing large and medium-sized advertising points, except on roads that have been designated as advertising-free areas;
 - b. on Collector roads, it is intended for placing large, medium and small advertising spots except on roads that have been designated as advertising-free areas;

- c. on local roads, it is only used for placing medium and small advertising points, except for roads that have been designated as advertising-free areas; And
 - d. on environmental roads only for placing small advertising points except in designated advertising-free areas;
- (2) Provisions regarding the location of advertising points as follows referred to in paragraph (1) is regulated in:
- a. Regional Regulations on Spatial and Regional Planning;
And;
 - b. Regent's Decree.

Article 6

- (1) Advertisements on the road network in urban areas can be placed within the useful space of the road with the following conditions:
- a. placed outside the road shoulder or sidewalk with a minimum distance of 1 (one) meter from the outer edge of the road shoulder or sidewalk; And
 - b. In the event that there is no space outside the road shoulder, sidewalk or traffic lane, the advertisement as referred to in letter a can be placed on the outermost side of the road space.
- (2) Advertisements on road networks outside urban areas can be placed in road space on the outermost side.
- (3) Advertisements can be installed on pedestrian bridge structures without endangering the bridge construction and the safety of road users.
- (4) Advertisements above the road utility space must be placed at a minimum height of 5 (five) meters from the highest road surface.

Article 7

- (1) Placement of advertisements in the form of *net signs* is carried out by provision:
- a. the height of the net sign is a maximum of 3 (three) meters;
 - b. the distance between net sign advertisements is at least 25 meters;
 - c. the closest advertising distance is 50 (fifty) meters from the road intersection;
And
 - d. implementation of net sign advertisements in road medians:
 - 1. with a width of 5 meters or more, the sign net has a maximum area of 4 (four) square meters; And
 - 2. with a width of less than 5 (five) meters, Sign net maximum area of 2 (two) square meters.

- (2) Placement of advertisements in the form of billboards is carried out by provision:
- a. the largest advertising area is 24 (twenty four) square meters; And
 - b. advertising material that promotes an activity or incidental events.

Article 8

- (1) Regional governments can designate certain areas as advertising-free area (*white area*).
- (2) The determination of an area as an advertising-free area is determined by a Regent's Decree.

Part Three
Cross-sectional Size, Foundation Construction and Lighting

Paragraph 1
General

Article 9

- Organizing advertisements must pay attention to the provisions regarding:
- a. cross-sectional size;
 - b. foundation construction; And
 - c. lighting.

Paragraph 2
Cross Section Size

Article 10

- (1) The cross-sectional size as intended in Article 9 letter a, is:
 - a. the size of advertisements outside building plots is adjusted to the average speed of each road corridor so that they can still be clearly seen by both motorists and pedestrians, namely 2.0 – 24 meters;
 - b. placing advertisements on parcels Buildings are not permitted to cover the building facade and exceed the fence dividing the building plot. The maximum size permitted is 25% (twenty five percent) of the total facade area; And
 - c. The minimum size of advertising text is adjusted to the average speed of each road corridor, namely 0.14 – 0.28 meters.
- (2) Further provisions regarding the cross-sectional size of advertisements as intended in paragraph (1) are contained in the Attachment which is an inseparable part of this Regent's Regulation.

Paragraph 3
Foundation Construction

Article 11

- (1) Provisions regarding foundation construction as intended in Article 9 letter b, are:
- a. selecting strong types of construction materials such as stainless steel so that the construction is more sturdy, durable and safe for vehicle drivers and pedestrians passing by;
 - b. the form of advertisements, whether attached to the plot or stand-alone advertisements, must be adapted to the condition of existing buildings and complementary road infrastructure;
 - c. advertisements located outside the plot with a cross-sectional size of 2 – 12 meters use two support poles and advertisements with a cross-sectional size of more than 12 (twelve) meters use three or more support poles; And
 - d. Advertising construction poles made from conductive/electric current-conducting materials must be equipped with grounding and insulation.
- (2) Provisions regarding foundation construction as intended in paragraph (1) are listed in the Attachment which is an inseparable part of this Regent's Regulation.

Paragraph 4
Lighting

Article 12

- (1) Lighting as referred to in Article 9 letter c, is lighting using external lighting at each advertisement installation and variations in lighting through the use of illuminated advertisements.
- (2) Further provisions regarding the form of the lighting table as intended in paragraph (1) are contained in the Attachment which is an inseparable part of this Regent's Regulation.

CHAPTER V

INSTALLATION OF ADVERTISEMENTS BASED ON STRATEGIC VALUE

Article 13

Installation of advertisements based on strategic value is regulated in a separate Regent's Regulation.

CHAPTER VI
REQUIREMENTS FOR RECLAIMING PERMITS AND LICENSE RENEWAL
ADVERTISEMENT

Article 14

Advertising organizers are required to submit an application for an advertising permit and an extension of the advertising permit.

Article 15

- (1) Submitting an application for an advertising permit and extending an advertising permit as intended in Article 14, the content of the advertising material is prohibited:
 - a. instigate;
 - b. contrasting elements of SARA (Ethnicity, Religion, Race and Inter-Group) and maintaining norms of politeness;
 - c. contains hate speech including insults, defamation, defamation, unpleasant acts and spreading false news;
 - d. provoke;
 - e. contains pornographic elements;
 - f. contains names, photos, images or writings of individuals, legal entities and/or political parties along with attributes that lead to elections and/or elections at prohibited road locations; and/or
 - g. violates the provisions stipulated in statutory regulations.
- (2) The advertising material submitted in the application for an advertising permit and extension of the advertising permit as intended in paragraph (1) shall be researched by the Regional Financial Agency.
- (3) Road locations that are prohibited from carrying out advertising as intended in paragraph (1) letter f include:
 - a. Jalan Jenderal Sudirman Kartasura from the Kartasura monument roundabout to the Klaten Regency boundary;
 - b. Jalan Diponegoro Kartasura from the Tugu Kartasura roundabout up to the boundaries of Boyolali Regency;
 - c. Jalan Ahmad Yani Kartasura from the Kartasura monument roundabout to the Surakarta City boundary;
 - d. Jalan Veteran Sukoharjo in front of PD. BPR Market Bank Sukoharjo;
 - e. Jalan Tanjunganom to the city limits of Surakarta;
 - f. Jalan Merak Raya Solo Baru;
 - g. Jalan Palem Raya Solo Baru;
 - h. Jalan Cemara Raya Solo Baru;

- i. Jalan Raya Ir. Soekarno Solo Baru reached the limit Wonogiri Regency;
 - j. the Surakarta – Sukoharjo road starting from the city limits of Surakarta to the city of Sukoharjo; And
 - k. The Solo – Tawangmangu road starts from the Jurug bridge to the Karanganyar Regency boundary on the southern side of the road.
- (4) Further provisions regarding the requirements for applications for Advertising Permits and Extensions of Advertising Permits are regulated in a separate Regent's Regulation.

CHAPTER VII

OBLIGATION TO PAY DISASSEMBLY SECURITY MONEY
ADVERTISEMENT AND RISK COVERAGE

Article 16

The obligation to pay security deposits for the removal of advertisements and risk coverage is regulated in a separate Regent's Regulation.

CHAPTER VIII

MAIN ROAD OR PROTOCOL

Article 17

- (1) Organizing advertisements in the context of controlling cigarette advertisements is prohibited from being placed on main or protocol roads.
- (2) The main road or protocol as intended in paragraph (1) determined by Regent's Decree.

CHAPTER IX

PROCEDURES FOR SUPERVISION AND CONTROL
IMPLEMENTATION OF ADVERTISEMENTS

Article 18

- (1) Supervision and control of the implementation of advertisements is carried out from the process of submitting an application for an advertisement permit until the time limit for the installation permit expires or after the permit is revoked.
- (2) Advertisement supervision activities include inspection implementation of the Advertising Operation Permit.
- (3) Advertisement control activities include location inspections, checking information on public complaints, and imposing administrative sanctions.

Article 19

Further provisions regarding supervision and control of the implementation of advertisements are regulated in a separate Regent's Regulation.

CHAPTER X

PROCEDURES FOR IMPLEMENTING COMMUNITY PARTICIPATION

Article 20

- (1) The community can participate in the implementation advertising.
- (2) Community participation as intended in paragraph (1) is carried out by:
 - a. provide input, suggestions and/or suggestions either verbally and/or in writing; And
 - b. report violations of regulations related to advertising by advertising operators.
- (3) Further provisions regarding procedures for implementing community participation are regulated in a separate Regent's Regulation.

CHAPTER XI

PROCEDURES FOR IMPLEMENTING ADMINISTRATIVE SANCTIONS

Article 21

- (1) Advertisement organizers who violate the provisions as intended in Article 9, Article 14, Article 15 and Article 16 subject to administrative sanctions.
- (2) Administrative sanctions as intended in paragraph (1) are possible in the form of:
 - a. written warning;
 - b. termination of advertising function;
 - c. revocation of permits; and/or
 - d. demolition of advertisements.
- (3) The imposition of administrative sanctions in the form of a written warning as intended in paragraph (2) letter a is carried out by the Civil Service Police Unit (Satpol PP) by giving a written warning to the advertising organizer.
- (4) The imposition of administrative sanctions in the form of termination of the advertising function as intended in paragraph (2) letter b is carried out by the Civil Service Police Unit (Satpol PP) by closing the advertising material.
- (5) The imposition of administrative sanctions in the form of revocation of permits as referred to in paragraph (2) letter c is carried out by the One Stop Integrated Services and Investment Service (DPMPTSP).
- (6) The imposition of administrative sanctions in the form of demolition as intended in paragraph (2) letter d is carried out by the Civil Service Police Unit (Satpol PP).

- (7) The imposition of administrative sanctions in the form of dismantling advertisements as intended in paragraph (2) letter d can be implemented without being preceded by a written warning.
- (8) In the event that the imposition of administrative sanctions in the form of dismantling advertisements as intended in paragraph (2) letter d is preceded by the giving of a written warning, then the dismantling of the billboards shall be carried out no sooner than 1 (one) day after the written warning is given.
- (9) The results of the demolition as intended in paragraph (6) become the authority of the Civil Service Police Unit (Satpol PP).

CHAPTER XII
CLOSING

Article 22

This Regent's Regulation comes into force on the date of promulgation.

So that everyone is aware, this Regent's Regulation is ordered to be promulgated by placing it in the Regional Gazette
Sukoharjo Regency.

Stipulated in Sukoharjo on
December 31 2018

REGENT SUKOHARJO,

signed

WARDOYO WIJAYA

Promulgated in Sukoharjo
on December 31, 2018

REGIONAL SECRETARY
SUKOHARJO DISTRICT,

signed

AGUS SANTOSA

REGIONAL NEWS SUKOHARJO DISTRICT
YEAR 2018 NUMBER 90

ATTACHMENT
SUKOHARJO REGENCY REGULATIONS
NUMBER 89 OF 2018
ABOUT
INSTRUCTIONS FOR IMPLEMENTING REGULATIONS
SUKOHARJO DISTRICT REGION NUMBER 9
2018 CONCERNING IMPLEMENTATION
ADVERTISEMENT

1. BILLBOARD CONSTRUCTION - HORIZONTAL

Size: 8m x 16m x 1 side / 2 sides

CONSTRUCTION DETAILS

Type : Billboard Frontlight/Backlight
Size : 8m x 16m
Number of Sides : 1 Side / 2 Sides
Height : Customize Location
Orientation : Horizontal

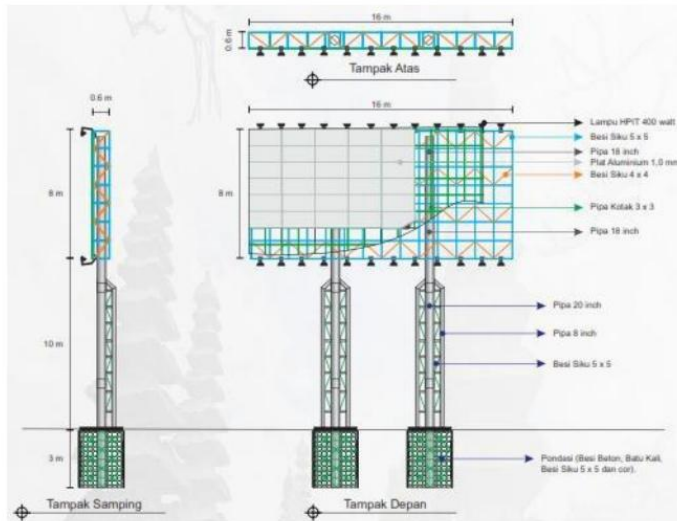


SPECIFICATION

Top : - Typical Javanese carvings as icon of Sukoharjo Regency
- Customized materials
Media Section : - Adjustable frame construction
- Using frames
- Adjustable lighting
- Customized materials
Supporting Pillars: - Thickening of supporting pillars (covered pillar) by carving/ typical Javanese batik ornament
- Adjustable pole pipe
Foundation : - Adjustable foundation size

EXPLANATION

- Construction strength requirements ensure public or environmental safety.
- Construction design is adjusted to drawings and specifications to support the beauty of the environment and culture in Sukoharjo Regency.
- Shape and size of certain road functions in certain functional areas with pay attention to the availability of advertising media space and suitability to the characteristics landscape/environment as well as safety factors.
- Adjustment of lighting for billboard advertising media to the surrounding environment.
- Placement that does not protrude from the road (the edge of the billboard is parallel to the asphalt) high from asphalt at least 5 meters.
- Placement of billboard advertisements can be with or without a base (customize).
-



TECHNICAL SPECIFICATIONS

Frame and Field Construction: -
 Angle iron 5 x 5 and 4 x 4

- Hollow iron plane frame 3 x 3 - 1.0
 mm aluminum plane

Lighting :

- HPIT / LED (customize)

Poles :

- 20 inch pipe
- 18 inch pipe
- 16 inch pipe
- 8 inch pipe

Foundation :

- Steel bar
- 5 x 5 angle iron
- River stone
- Cast concrete

CONSTRUCTION DETAILS

Type : Billboard Frontlight/Backlight :

Size : 8m x 16m

Number of Sides: 1 Side / 2 Sides

Height : Customize Location

Orientation : Horizontal

2. BILLBOARD CONSTRUCTION - VERTICAL

Size: 8m x 16m x 1 side / 2 sides

CONSTRUCTION DETAILS

Type : Billboard Frontlight/Backlight

Size : 8m x 16m

Number of Sides: 1 Side / 2 Sides

Height : Customize Location

Orientation : Vertical



SPECIFICATION

Top : - Typical Javanese carving as an icon of Sukoharjo Regency
- Customized materials

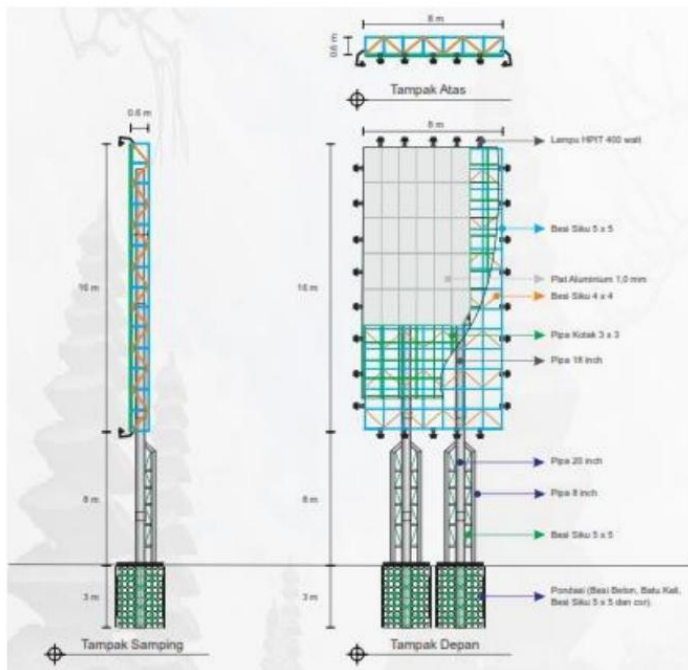
Media Section : - Frame construction customized
- Using frames
- Lighting customized
- Customized materials

Supporting Pillars: - Thickening of supporting pillars (covered pillar) by carving/ typical Javanese batik ornament
- Adjustable pole pipe

Foundation : - Adjustable foundation size

EXPLANATION

- Construction strength requirements ensure public or environmental safety.
- Construction design is adjusted to drawings and specifications to support the beauty of the environment and culture in Sukoharjo Regency.
- Shape and size of certain road functions in certain functional areas with pay attention to the availability of advertising media space and suitability to the characteristics landscape/environment as well as safety factors.
- Adjustment of lighting for billboard advertising media to the surrounding environment.
- Placement that does not protrude from the road (the edge of the billboard is parallel to the asphalt) high from asphalt at least 5 meters.
- Placement of billboard advertisements can be with or without a base (customize).



TECHNICAL

SPECIFICATIONS Frame and Field Construction: - 5 x 5

and 4 x 4 angle iron - 3 x 3 hollow iron field frame - 1.0 mm aluminum field

Lighting :

- HPIT / LED (customize)

Poles :

- 20 inch pipe
- 18 inch pipe
- 16 inch pipe
- 8 inch pipe

Foundation :

- Steel bar
- 5 x 5 angle iron
- River stone
- Cast concrete

CONSTRUCTION DETAILS

Type : Billboard Frontlight/Backlight
 Size: 8m x 16m
 Number of Sides: 1 Side / 2 Sides
 Height : Customize Location
 Orientation : Vertical

3. BILLBOARD CONSTRUCTION - HORIZONTAL

Size: 6m x 12m x 1 side / 2 sides

CONSTRUCTION DETAILS

Type : Billboard Frontlight/Backlight

Size : 6m x 12m

Number of Sides: 1 Side / 2 Sides

Height : Customize Location

Orientation : Horizontal



SPECIFICATION

Top : - Typical Javanese carving as an icon of Sukoharjo Regency
- Customized materials

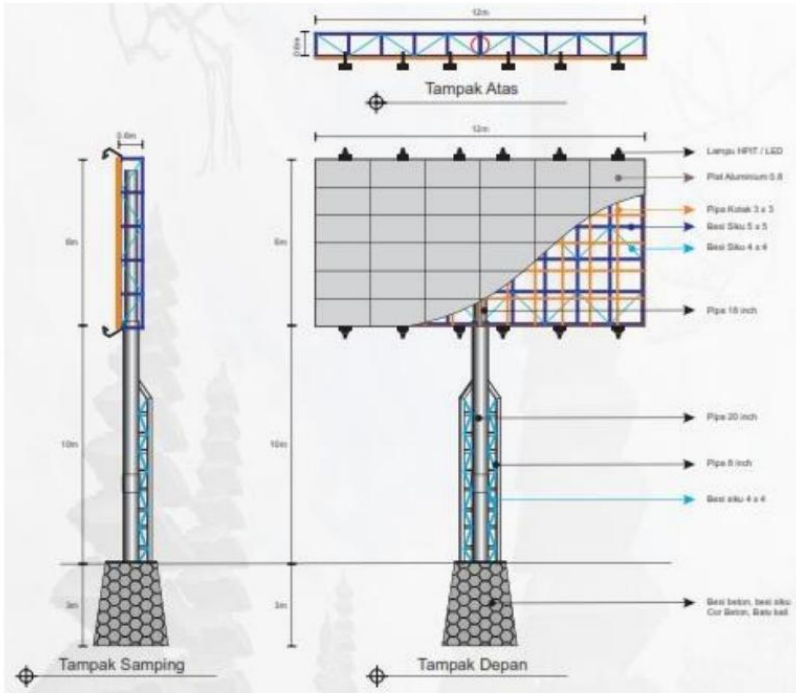
Media Section : - Frame construction customized
- Using frames
- Lighting customized
- Customized materials

Supporting Pillars: - Thickening of supporting pillars (covered pillar) by carving/ typical Javanese batik ornament
- Adjustable pole pipe

Foundation : - Adjustable foundation size

EXPLANATION

- Construction strength requirements ensure public or environmental safety.
- Construction design is adjusted to drawings and specifications to support the beauty of the environment and culture in Sukoharjo Regency.
- Shape and size of certain road functions in certain functional areas with pay attention to the availability of advertising media space as well as suitability to landscape/ environmental characteristics and safety factors.
- Adjustment of lighting for billboard advertising media to the surrounding environment.
- Placement that does not protrude from the road (the edge of the billboard is parallel to the asphalt) high from asphalt at least 5 meters.
- Placement of billboard advertisements can be with or without a base (customize).
-



CONSTRUCTION DETAILS

Type : Billboard Frontlight/Backlight
 Size: 6m x 12m
 Number of Sides: 1 Side / 2 Sides
 Height : Customize Location
 Orientation : Horizontal

TECHNICAL

SPECIFICATIONS Frame and Field Construction: - 5 x 5 and 4 x 4 angle iron - 3 x 3 hollow iron field frame - 1.0 mm aluminum field

Lighting :
 - HPIT / LED (customize)

Poles :
 - 20 inch pipe
 - 18 inch pipe
 - 16 inch pipe
 - 8 inch pipe

Foundation :
 - Steel bar
 - 5 x 5 angle iron
 - River stone
 - Cast concrete

4. BILLBOARD CONSTRUCTION - VERTICAL

Size: 6m x 12m x 1 side / 2 sides

CONSTRUCTION DETAILS

Type : Billboard Frontlight/Backlight

Size : 6m x 12m

Number of Sides: 1 Side / 2 Sides

Height : Customize Location

Orientation : Vertical



SPECIFICATION

Top : - Typical Javanese carvings as icon of Sukoharjo Regency
- Customized materials

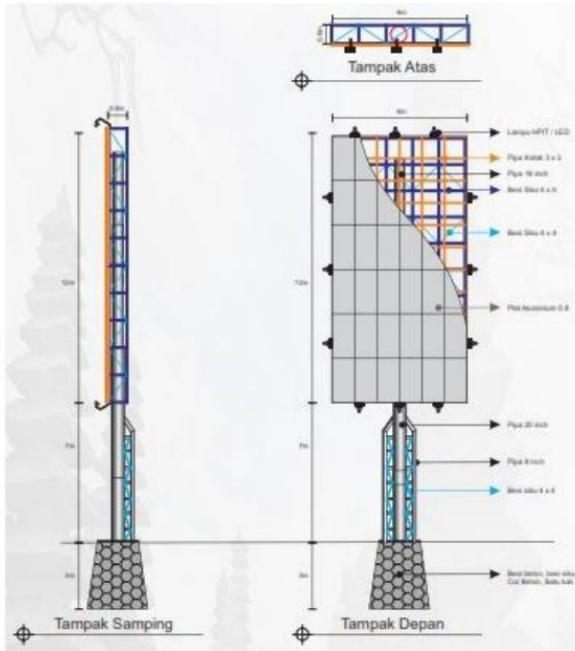
Media Section : - Frame construction customized
- Using frames
- Lighting customized
- Customized materials

Supporting Pillars: - Thickening of supporting pillars (covered pillar) by carving/ typical Javanese batik ornament
- Adjustable pole pipe

Foundation : - Adjustable foundation size

EXPLANATION

- Construction strength requirements ensure public or environmental safety.
- Construction design is adjusted to drawings and specifications to support the beauty of the environment and culture in Sukoharjo Regency.
- Shape and size of certain road functions in certain functional areas with pay attention to the availability of advertising media space as well as suitability to landscape/ environmental characteristics and safety factors.
- Adjustment of lighting for billboard advertising media to the surrounding environment.
- Placement that does not protrude from the road (the edge of the billboard is parallel to the asphalt) high from asphalt at least 5 meters.
- Placement of billboard advertisements can be with or without a base (customize).



TECHNICAL SPECIFICATIONS

Frame and Field Construction:

- 5 x 5 and 4 x 4 angle iron
- 3 x 3 hollow iron plane frame - 1.0 mm aluminum plane

Lighting :

- HPIT / LED (customize)

Poles :

- 20 inch pipe
- 18 inch pipe
- 16 inch pipe
- 8 inch pipe

Foundation :

- Steel bar
- River stone
- Cast concrete

CONSTRUCTION DETAILS

Type : Billboard Frontlight/Backlight :

Size : 6m x 12m

Number of Sides: 1 Side / 2 Sides

Height : Customize Location

Orientation : Vertical

5. BILLBOARD CONSTRUCTION - HORIZONTAL

Size: 5m x 10m x 1 side / 2 sides

CONSTRUCTION DETAILS

Type : Billboard Frontlight/Backlight
Size : 5m x 10m
Number of Sides : 1 Side / 2 Sides
Height : Customize Location
Orientation : Horizontal



SPECIFICATION

Top : - Typical Javanese carvings as icon of Sukoharjo Regency
- Customized materials

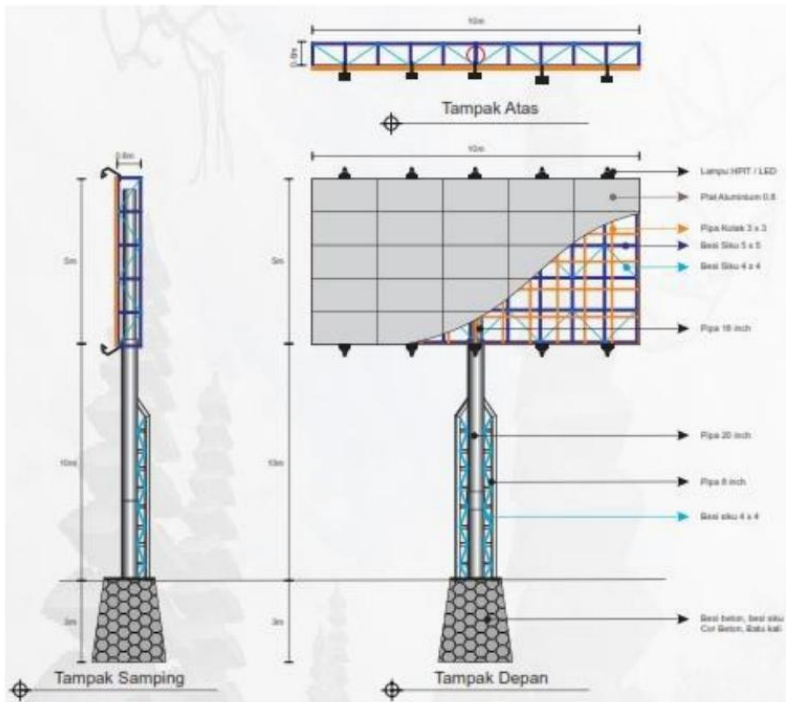
Media Section : - Frame construction customized
- Using frames
- Lighting customized
- Customized materials

Supporting Pillars: - Thickening of supporting pillars (covered pillar) by carving/ typical Javanese batik ornament
- Adjustable pole pipe

Foundation : - Adjustable foundation size

EXPLANATION

- Construction strength requirements ensure public or environmental safety.
- Construction design is adjusted to drawings and specifications to support the beauty of the environment and culture in Sukoharjo Regency.
- Shape and size of certain road functions in certain functional areas with pay attention to the availability of advertising media space and suitability to the characteristics landscape/environment as well as safety factors.
- Adjustment of lighting for billboard advertising media to the surrounding environment.
- Placement that does not protrude from the road (the edge of the billboard is parallel to the asphalt) high from asphalt at least 5 meters.
- Placement of billboard advertisements can be with or without a base (customize).
-



TECHNICAL SPECIFICATIONS

Frame and Field Construction: -
 Angle iron 5 x 5 and 4 x 4

- Hollow iron plane frame 3 x 3 - 1.0
 mm aluminum plane

Lighting :

- HPIT / LED (customize)

Poles :

- 20 inch pipe
- 18 inch pipe
- 16 inch pipe
- 8 inch pipe

Foundation :

- Steel bar
- 5 x 5 angle iron
- River stone
- Cast concrete

CONSTRUCTION DETAILS

Type : Billboard Frontlight/Backlight :

Size : 5m x 10m

Number of Sides: 1 Side / 2 Sides

Height : Customize Location

Orientation : Horizontal

6. BILLBOARD CONSTRUCTION - VERTICAL

Size: 5m x 10m x 1 side / 2 sides

CONSTRUCTION DETAILS

Type : Billboard Frontlight/Backlight
Size : 5m x 10m
Number of Sides: 1 Side / 2 Sides
Height : Customize Location
Orientation : Vertical

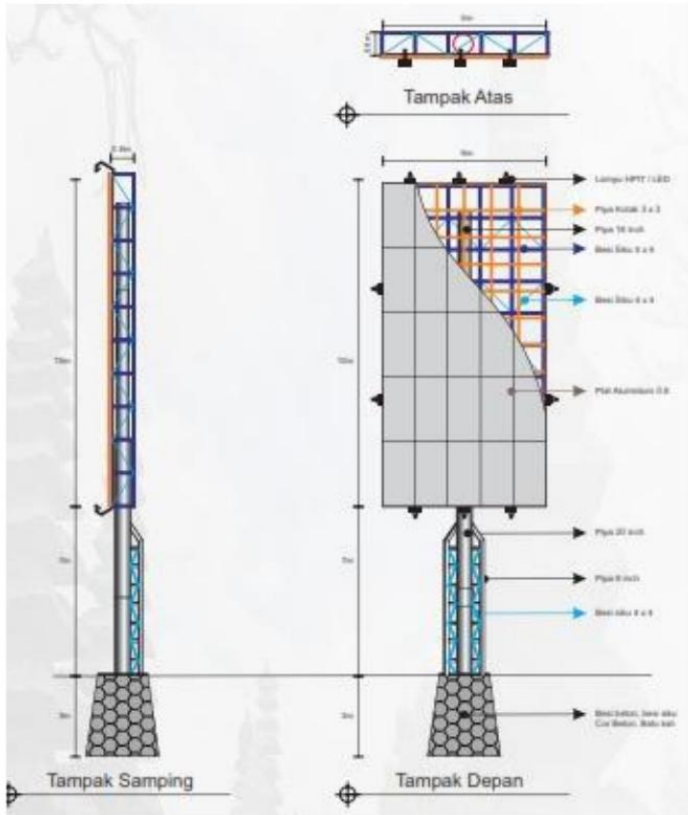


SPECIFICATION

Top : - Typical Javanese carvings as icon of Sukoharjo Regency
- Customized materials
Media Section : - Frame construction customized
- Using frames
- Lighting customized
- Customized materials
Supporting Pillars: - Thickening of supporting pillars (covered pillar) by carving/ typical Javanese batik ornament
- Adjustable pole pipe
Foundation : - Adjustable foundation size

EXPLANATION

- Construction strength requirements ensure public or environmental safety.
- Construction design is adjusted to drawings and specifications to support the beauty of the environment and culture in Sukoharjo Regency.
- Shape and size of certain road functions in certain functional areas with pay attention to the availability of advertising media space as well as suitability to landscape/ environmental characteristics and safety factors.
- Adjustment of lighting for billboard advertising media to the surrounding environment.
- Placement that does not protrude from the road (the edge of the billboard is parallel to the asphalt) high from asphalt at least 5 meters.
- Placement of billboard advertisements can be with or without a base (customize).



CONSTRUCTION DETAILS

Type : Billboard Frontlight/Backlight
 Size: 5m x 10m
 Number of Sides: 1 Side / 2 Sides
 Height : Customize Location
 Orientation : Vertical

TECHNICAL SPECIFICATIONS

Frame and Field Construction: -
 Angle iron 5 x 5 and 4 x 4
 - Hollow iron plane frame 3 x 3 - 1.0 mm aluminum plane

Lighting :
 - HPIT / LED (customize)

Poles :
 - 20 inch pipe
 - 18 inch pipe
 - 16 inch pipe
 - 8 inch pipe

Foundation :
 - Steel bar
 - 5 x 5 angle iron
 - River stone
 - Cast concrete

7. BILLBOARD CONSTRUCTION - HORIZONTAL

Size: 4m x 8m x 1 side / 2 sides

CONSTRUCTION DETAILS

Type : Billboard Frontlight/Backlight
Size : 4m x 8m
Number of Sides : 1 Side / 2 Sides
Height : Customize Location
Orientation : Horizontal

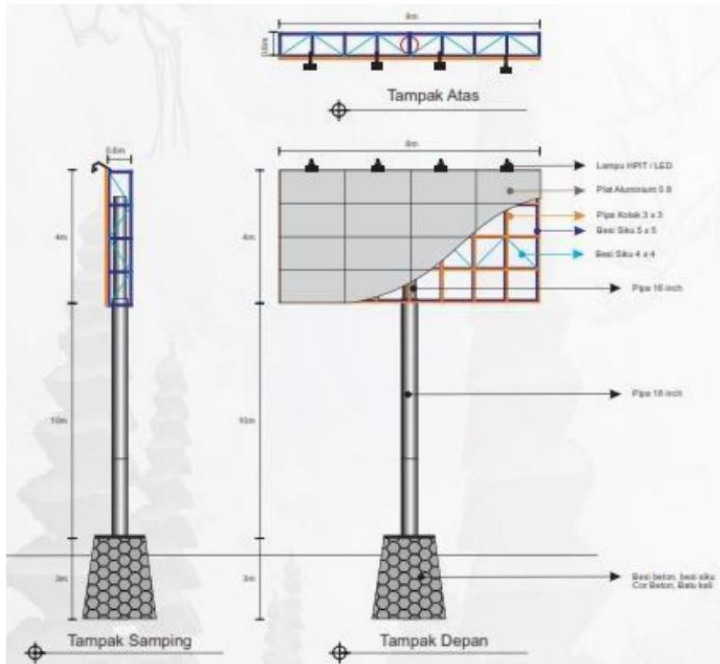


SPECIFICATION

Top : - Typical Javanese carvings as icon of Sukoharjo Regency
- Customized materials
Media Section : - Frame construction customized
- Using frames
- Lighting customized
- Customized materials
Supporting Pillars: - Thickening of supporting pillars (covered pillar) by carving/ typical Javanese batik ornament
- Adjustable pole pipe
Foundation : - Adjustable foundation size

EXPLANATION

- Construction strength requirements ensure public or environmental safety.
- Construction design is adjusted to drawings and specifications to support the beauty of the environment and culture in Sukoharjo Regency.
- Shape and size of certain road functions in certain functional areas with pay attention to the availability of advertising media space as well as suitability to landscape/ environmental characteristics and safety factors.
- Adjustment of lighting for billboard advertising media to the surrounding environment.
- Placement that does not protrude from the road (the edge of the billboard is parallel to the asphalt) high from asphalt at least 5 meters.
- Placement of billboard advertisements can be with or without a base (customize).
-



TECHNICAL SPECIFICATIONS

Frame and Field Construction:

- 5 x 5 and 4 x 4 angle iron
- 3 x 3 hollow iron plane frame - 1.0 mm aluminum plane

Lighting :

- HPIT / LED (customize)

Poles :

- 20 inch pipe
- 18 inch pipe
- 16 inch pipe
- 8 inch pipe

Foundation :

- Steel bar
- 5 x 5 angle iron
- River stone
- Cast concrete

CONSTRUCTION DETAILS

Type : Billboard Frontlight/Backlight
 Size : 4m x 8m
 Number of Sides: 1 Side / 2 Sides
 Height : Customize Location
 Orientation : Horizontal

8. BILLBOARD CONSTRUCTION - VERTICAL

Size: 4m x 8m x 1 side / 2 sides

CONSTRUCTION DETAILS

Type : Billboard Frontlight/Backlight

Size : 4m x 8m

Number of Sides: 1 Side / 2 Sides

Height : Customize Location

Orientation : Vertical



SPECIFICATION

Top : - Typical Javanese carvings as icon of Sukoharjo Regency
- Customized materials

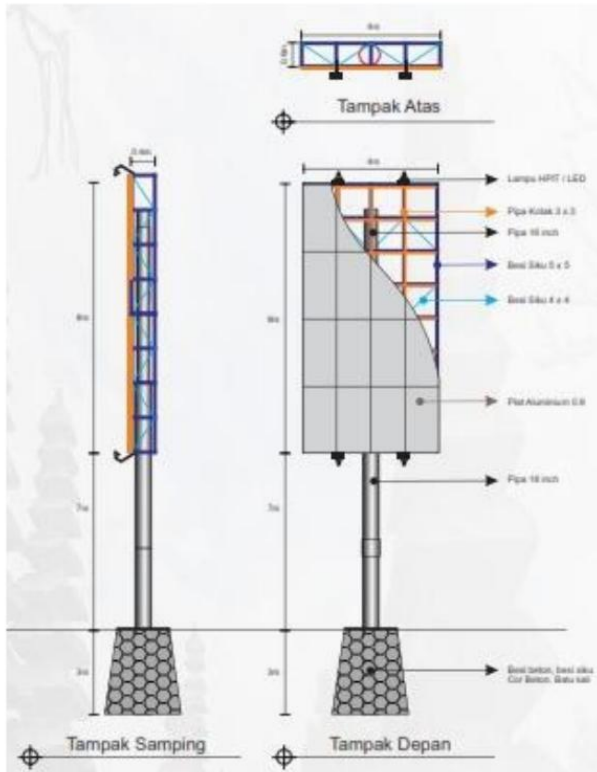
Media Section : - Frame construction customized
- Using frames
- Lighting customized
- Customized materials

Supporting Pillars: - Thickening of supporting pillars (covered pillar) by carving/ typical Javanese batik ornament
- Adjustable pole pipe

Foundation : - Adjustable foundation size

EXPLANATION

- Construction strength requirements ensure public or environmental safety.
- Construction design is adjusted to drawings and specifications to support the beauty of the environment and culture in Sukoharjo Regency.
- Shape and size of certain road functions in certain functional areas with pay attention to the availability of advertising media space and suitability to the characteristics landscape/environment as well as safety factors.
- Adjustment of lighting for billboard advertising media to the surrounding environment.
- Placement that does not protrude from the road (the edge of the billboard is parallel to the asphalt) high from asphalt at least 5 meters.
- Placement of billboard advertisements can be with or without a base (customize).



TECHNICAL

SPECIFICATIONS Frame and Field Construction: - 5 x 5 and 4 x 4 angle iron - 3 x 3 hollow iron field frame - 1.0 mm aluminum field

Lighting :
- HPIT / LED (customize)

Poles :
- 20 inch pipe
- 18 inch pipe
- 16 inch pipe
- 8 inch pipe

Foundation :
- Steel bar
- River stone
- Cast concrete

CONSTRUCTION DETAILS

Type : Billboard Frontlight/Backlight :
Size : 4m x 8m
Number of Sides: 1 Side / 2 Sides
Height : Customize Location
Orientation : Vertical

9. BILLBOARD CONSTRUCTION - HORIZONTAL

Size: 4m x 6m x 1 side / 2 sides

CONSTRUCTION DETAILS

Type : Billboard Frontlight/Backlight

Size : 4m x 6m

Number of Sides: 1 Side / 2 Sides

Height : Customize Location

Orientation : Horizontal

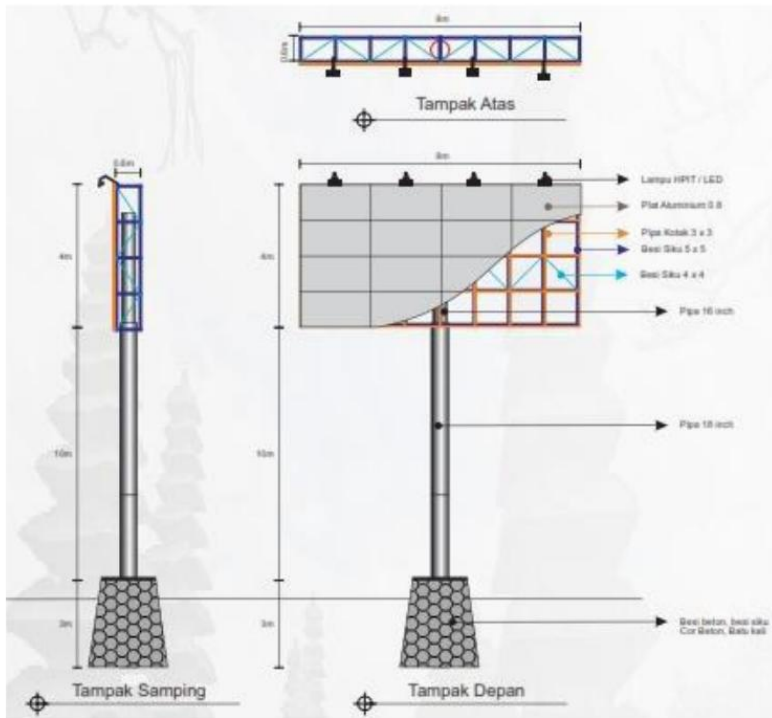


SPECIFICATION

Top	: - Typical Javanese carvings as icon of Sukoharjo Regency - Customized materials
Media Section	: - Frame construction customized - Using frames - Lighting customized - Customized materials
Supporting Pillars:	- Thickening of supporting pillars (covered pillar) by carving/ typical Javanese batik ornament - Adjustable pole pipe
Foundation	: - Adjustable foundation size

EXPLANATION

- Construction strength requirements ensure public or environmental safety.
- Construction design is adjusted to drawings and specifications to support the beauty of the environment and culture in Sukoharjo Regency.
- Shape and size of certain road functions in certain functional areas with pay attention to the availability of advertising media space and suitability to the characteristics landscape/environment as well as safety factors.
- Adjustment of lighting for billboard advertising media to the surrounding environment.
- Placement that does not protrude from the road (the edge of the billboard is parallel to the asphalt) high from asphalt at least 5 meters.
- Placement of billboard advertisements can be with or without a base (customize).
-



TECHNICAL

SPECIFICATIONS Frame and Field Construction: - 5 x 5

and 4 x 4 angle iron - 3 x 3 hollow iron field frame - 1.0 mm aluminum field

Lighting :

- HPIT / LED (customize)

Poles :

- 20 inch pipe

- 18 inch pipe

- 16 inch pipe

- 8 inch pipe

Foundation :

- Steel bar

- 5 x 5 angle iron

- River stone

- Cast concrete

CONSTRUCTION DETAILS

Type : Billboard Frontlight/Backlight

Size : 4m x 6m

Number of Sides: 1 Side / 2 Sides

Height : Customize Location

Orientation : Horizontal

10. BILLBOARD CONSTRUCTION - VERTICAL

Size: 4m x 6m x 1 side / 2 sides

CONSTRUCTION DETAILS

Type : Billboard Frontlight/Backlight

Size : 4m x 6m

Number of Sides: 1 Side / 2 Sides

Height : Customize Location

Orientation : Vertical



SPECIFICATION

Top : - Typical Javanese carvings as icon of Sukoharjo Regency
- Customized materials

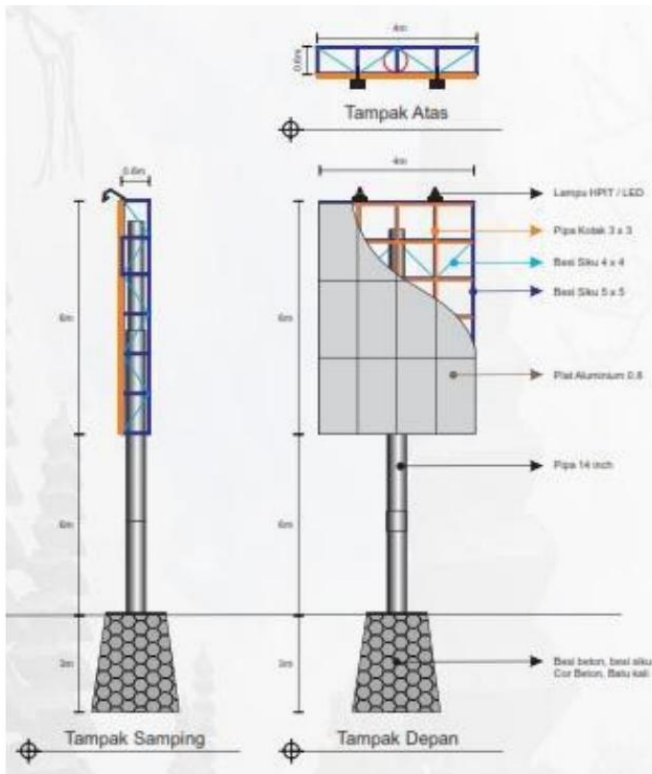
Media Section : - Frame construction customized
- Using frames
- Lighting customized
- Customized materials

Supporting Pillars: - Thickening of supporting pillars (covered pillar) by carving/ typical Javanese batik ornament
- Adjustable pole pipe

Foundation : - Adjustable foundation size

EXPLANATION

- Construction strength requirements ensure public or environmental safety.
- Construction design is adjusted to drawings and specifications to support the beauty of the environment and culture in Sukoharjo Regency.
- Shape and size of certain road functions in certain functional areas with pay attention to the availability of advertising media space as well as suitability to landscape/ environmental characteristics and safety factors.
- Adjustment of lighting for billboard advertising media to the surrounding environment.
- Placement that does not protrude from the road (the edge of the billboard is parallel to the asphalt) high from asphalt at least 5 meters.
- Placement of billboard advertisements can be with or without a base (customize).



TECHNICAL SPECIFICATIONS

Frame and Field Construction:

- 5 x 5 and 4 x 4 angle iron
- 3 x 3 hollow iron plane frame - 1.0 mm aluminum plane

Lighting :

- HPIT / LED (customize)

Poles :

- 20 inch pipe
- 18 inch pipe
- 16 inch pipe
- 8 inch pipe

Foundation :

- Steel bar
- 5 x 5 angle iron
- River stone
- Cast concrete

CONSTRUCTION DETAILS

Type : Billboard Frontlight/Backlight
 Size : 4m x 6m
 Number of Sides: 1 Side / 2 Sides
 Height : Customize Location
 Orientation : Vertical

11. BILLBOARD CONSTRUCTION - HORIZONTAL

Size: 4m x 8m x 1 side / 2 sides

CONSTRUCTION DETAILS

Type : Videotron
Size : 4m x 8m
Number of Sides: 1 Side
Height : Customize Location
Orientation : Horizontal



SPECIFICATION

Top : - Typical Javanese carvings as icon of Sukoharjo Regency
- Customized materials

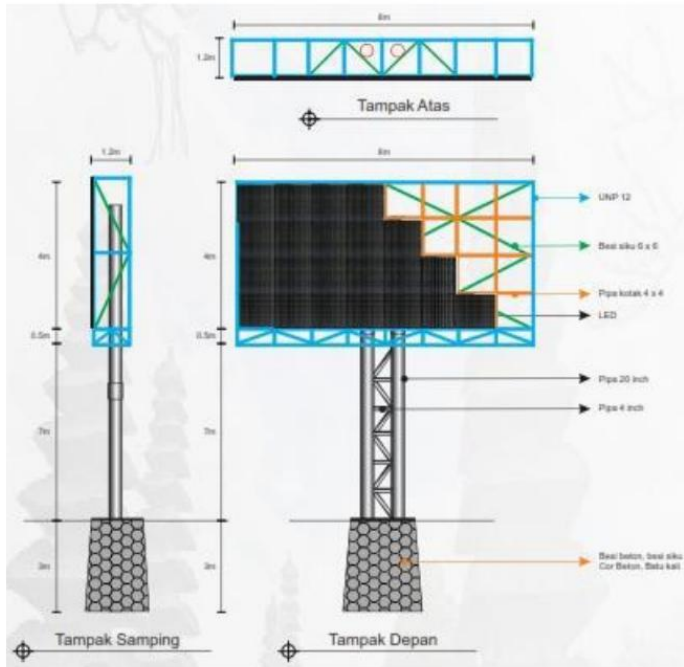
Media Section : - Frame construction customized
- Using frames
- Lighting customized
- Customized materials

Supporting Pillars: - Thickening of supporting pillars (covered pillar) by carving/ typical Javanese batik ornament
- Adjustable pole pipe

Foundation : - Adjustable foundation size

EXPLANATION

- Construction strength requirements ensure public or environmental safety.
- Construction design is adjusted to drawings and specifications to support the beauty of the environment and culture in Sukoharjo Regency.
- Shape and size of certain road functions in certain functional areas with pay attention to the availability of advertising media space and suitability to the characteristics landscape/environment as well as safety factors.
- Adjustment of lighting for billboard advertising media to the surrounding environment.
- Placement that does not protrude from the road (the edge of the billboard is parallel to the asphalt) high from asphalt at least 5 meters.
- Placement of billboard advertisements can be with or without a base (customize).
-



CONSTRUCTION DETAILS

Type : Videotron
 Size : 4m x 8m
 Number of Sides: 1 Side / 2 Sides
 Height : Customize Location
 Orientation : Horizontal

TECHNICAL

SPECIFICATIONS Frame and Field Construction: - 5 x 5 and 4 x 4 angle iron - 3 x 3 hollow iron field frame - 1.0 mm aluminum field

Lighting :
 - HPIT / LED (customize)

Poles :
 - 20 inch pipe
 - 18 inch pipe
 - 16 inch pipe
 - 8 inch pipe

Foundation :
 - Steel bar
 - 5 x 5 angle iron
 - River stone
 - Cast concrete

12. BILLBOARD CONSTRUCTION - VERTICAL

Size: 4m x 8m x 1 side / 2 sides

CONSTRUCTION DETAILS

Type : Videotron
Size : 4m x 8m
Number of Sides: 1 Side
Height : Customize Location
Orientation : Vertical



SPECIFICATION

Top : - Typical Javanese carvings as icon of Sukoharjo Regency
- Customized materials

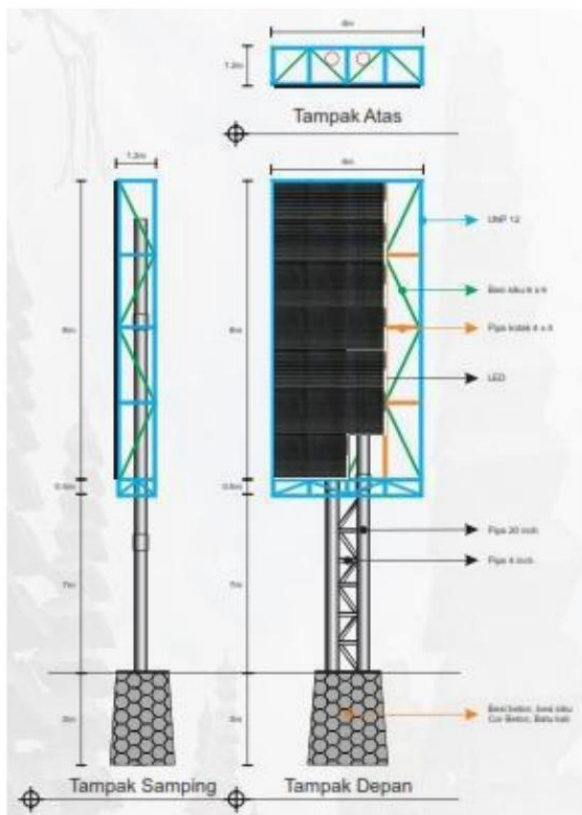
Media Section : - Frame construction customized
- Using frames
- Lighting customized
- Customized materials

Supporting Pillars: - Thickening of supporting pillars (covered pillar) by carving/ typical Javanese batik ornament
- Adjustable pole pipe

Foundation : - Adjustable foundation size

EXPLANATION

- Construction strength requirements ensure public or environmental safety.
- Construction design is adjusted to drawings and specifications to support the beauty of the environment and culture in Sukoharjo Regency.
- Shape and size of certain road functions in certain functional areas with pay attention to the availability of advertising media space as well as suitability to landscape/ environmental characteristics and safety factors.
- Adjustment of lighting for billboard advertising media to the surrounding environment.
- Placement that does not protrude from the road (the edge of the billboard is parallel to the asphalt) high from asphalt at least 5 meters.
- Placement of billboard advertisements can be with or without a base (customize).



CONSTRUCTION DETAILS

Type : Videotron
 Size : 4m x 8m
 Number of Sides: 1 Side / 2 Sides
 Height : Customize Location
 Orientation : Vertical

TECHNICAL SPECIFICATIONS

Frame and Field Construction: -
 Angle iron 5 x 5 and 4 x 4
 - Hollow iron plane frame 3 x 3 - 1.0 mm aluminum plane

Lighting :
 - HPIT / LED (customize)

Poles :
 - 20 inch pipe
 - 18 inch pipe
 - 16 inch pipe
 - 8 inch pipe

Foundation :
 - Steel bar
 - River stone
 - Cast concrete

13. NEON BOX CONSTRUCTION - HORIZONTAL

Size: 1m x 2m x 1 side / 2 sides

CONSTRUCTION DETAILS

Type : Neon Box
Size : 1m x 2m
Number of Sides: 1 side / 2 sides
Height : Customize Location
Orientation : Horizontal / Parallel to the Shop



SPECIFICATION

Top : - Typical Javanese carvings as icon of Sukoharjo Regency
- Customized materials

Media Section : - Frame construction customized
- Using frames
- Lighting customized
- Customized materials

Supporting Pillars: - Thickening of supporting pillars (covered pillar) by carving/ typical Javanese batik ornament
- Adjustable pole pipe

Foundation : - Adjustable foundation size

EXPLANATION

- Construction strength requirements ensure public or environmental safety.
- Construction design is adjusted to drawings and specifications to support the beauty of the environment and culture in Sukoharjo Regency.
- Shape and size of certain road functions in certain functional areas with pay attention to the availability of advertising media space and suitability to the characteristics landscape/environment as well as safety factors.
- Adjustment of lighting for billboard advertising media to the surrounding environment.
- Placement that does not protrude from the road (the edge of the billboard is parallel to the asphalt) high from asphalt at least 5 meters.
- Placement of billboard advertisements can be with or without a base (customize).

14. NEON BOX CONSTRUCTION - VERTICAL

Size: 1m x 2m x 1 side / 2 sides

CONSTRUCTION DETAILS

Type	: Neon Box
Size	: 1m x 2m
Number of Sides	: 1 side / 2 sides
Height	: Customize Location
Orientation	: Vertical / Transverse Shop Front



SPECIFICATION

Top	: - Typical Javanese carvings as icon of Sukoharjo Regency - Customized materials
Media Section	: - Frame construction customized - Using frames - Lighting customized - Customized materials
Poles	: - Thickening of support pillars (covered pillar) by carving/ typical Javanese batik ornament - Adjustable pole pipe
Foundation	: - Adjustable foundation size

EXPLANATION

- Construction strength requirements ensure public or environmental safety.
- Construction design is adjusted to drawings and specifications to support the beauty of the environment and culture in Sukoharjo Regency.
- Shape and size of certain road functions in certain functional areas with pay attention to the availability of advertising media space and suitability to the characteristics landscape/environment as well as safety factors.
- Adjustment of lighting for billboard advertising media to the surrounding environment.
- Placement that does not protrude from the road (the edge of the billboard is parallel to the asphalt) high from asphalt at least 5 meters.
- Placement of billboard advertisements can be with or without a base (customize).

15. PYLON SIGN ADVERTISEMENT CONSTRUCTION

CONSTRUCTION DETAILS

Type	: Joint Advertisement
Size	: Adapt
Number of Sides	: 1 side / 2 sides
Height	: Customize Location
Orientation	: Vertical

SPECIFICATION

Top	: - Typical Javanese carving as an icon of Sukoharjo Regency - Customized materials
Media Section	: - Frame construction customized - Using frames - Lighting customized - Customized materials
Supporting Pillars:	- Thickening of supporting pillars (covered pillar) by carving/ typical Javanese batik ornament - Adjustable pole pipe
Foundation	: - Adjustable foundation size



EXPLANATION

- Construction strength requirements ensure public or environmental safety.
- Construction design is adjusted to design and specifications to support the beauty of the environment and culture in Sukoharjo Regency.
- Shape and size of sign are adjusted to functional areas with landscape/environment as well as safety factors.
- Adjustment of lighting for billboard advertising media to the surrounding environment.
- Placement of sign parallel to the road (the edge of the billboard is parallel to the asphalt) height
- Placement of billboard advertisements can be with or without a base (customize).
- Placement of billboard advertisements can be with or without a base (customize).

16. ONE SIDED BILLBOARD CONSTRUCTION

CONSTRUCTION DETAILS

Type	: 1 sided mini billboard
Size	: Adapt
Number of Sides	: 1 side
Height	: Customize Location
Orientation	: Vertical



SPECIFICATION

Top	: - Typical Javanese carvings as icon of Sukoharjo Regency - Customized materials
Media Section	: - Frame construction customized - Using frames - Lighting customized - Customized materials
Supporting Pillars:	- Thickening of supporting pillars (covered pillar) by carving/ typical Javanese batik ornament - Adjustable pole pipe
Foundation	: - Adjustable foundation size

EXPLANATION

- Construction strength requirements ensure public or environmental safety.
- Construction design is adjusted to drawings and specifications to support the beauty of the environment and culture in Sukoharjo Regency.
- Shape and size of certain road functions in certain functional areas with pay attention to the availability of advertising media space and suitability to the characteristics landscape/environment as well as safety factors.
- Adjustment of lighting for billboard advertising media to the surrounding environment.
- Adjustment of placement to the surrounding billboard advertising media.
- Placement of billboard advertisements can be with or without a base (customize).

17. 2 SIDED BILLBOARD CONSTRUCTION

CONSTRUCTION DETAILS

Type	: 2-sided mini billboard
Size	: Adapt
Number of Sides	: 2 sides
Height	: Customize Location
Orientation	: Vertical



SPECIFICATION

Top	: - Typical Javanese carvings as icon of Sukoharjo Regency - Customized materials
Media Section	: - Frame construction customized - Using frames - Lighting customized - Customized materials
Supporting Pillars:	- Thickening of supporting pillars (covered pillar) by carving/ typical Javanese batik ornament - Adjustable pole pipe
Foundation	: - Adjustable foundation size

EXPLANATION

- Construction strength requirements ensure public or environmental safety.
- Construction design is adjusted to drawings and specifications to support the beauty of the environment and culture in Sukoharjo Regency.
- Shape and size of certain road functions in certain functional areas with pay attention to the availability of advertising media space as well as suitability to landscape/ environmental characteristics and safety factors.
- Adjustment of lighting for billboard advertising media to the surrounding environment.
- Adjustment of placement to the surrounding billboard advertising media.
- Placement of billboard advertisements can be with or without a base (customize).

18. BILLBOARD CENTER CONSTRUCTION

CONSTRUCTION DETAILS

Type : Billboard mini center
Size : Adapt
Number of Sides : 2 sides
Height : Customize Location
Orientation : Vertical



SPECIFICATION

Top : - Typical Javanese carvings as icon of Sukoharjo Regency
- Customized materials

Media Section : - Frame construction customized
- Using frames
- Lighting customized
- Customized materials

Supporting Pillars: - Thickening of supporting pillars (covered pillar) by carving/ typical Javanese batik ornament
- Adjustable pole pipe

Foundation : - Adjustable foundation size

EXPLANATION

- Construction strength requirements ensure public or environmental safety.
- Construction design is adjusted to drawings and specifications to support the beauty of the environment and culture in Sukoharjo Regency.
- Shape and size of certain road functions in certain functional areas with pay attention to the availability of advertising media space and suitability to the characteristics landscape/environment as well as safety factors.
- Adjustment of lighting for billboard advertising media to the surrounding environment.
- Adjustment of placement to the surrounding billboard advertising media.
- Placement of billboard advertisements can be with or without a base (customize).

REGENT SUKOHARJO,

signed

WARDOYO WIJAYA